

CalCombi

BY CALMAG



SPECIFICATIONS

Combination Magnetic & Electrolytic
in-line Scale Inhibitor with push fit fittings



Combination Magnetic & Electrolytic in-line Scale Inhibitor

with push fit fittings



WHAT CALCOMBI DOES...

In simple terms, water normally contains both positive and negative ions. These ions attract to form limescale. CalCombi induces single polarity, making all ions negative and therefore repelling, preventing the build up of limescale.



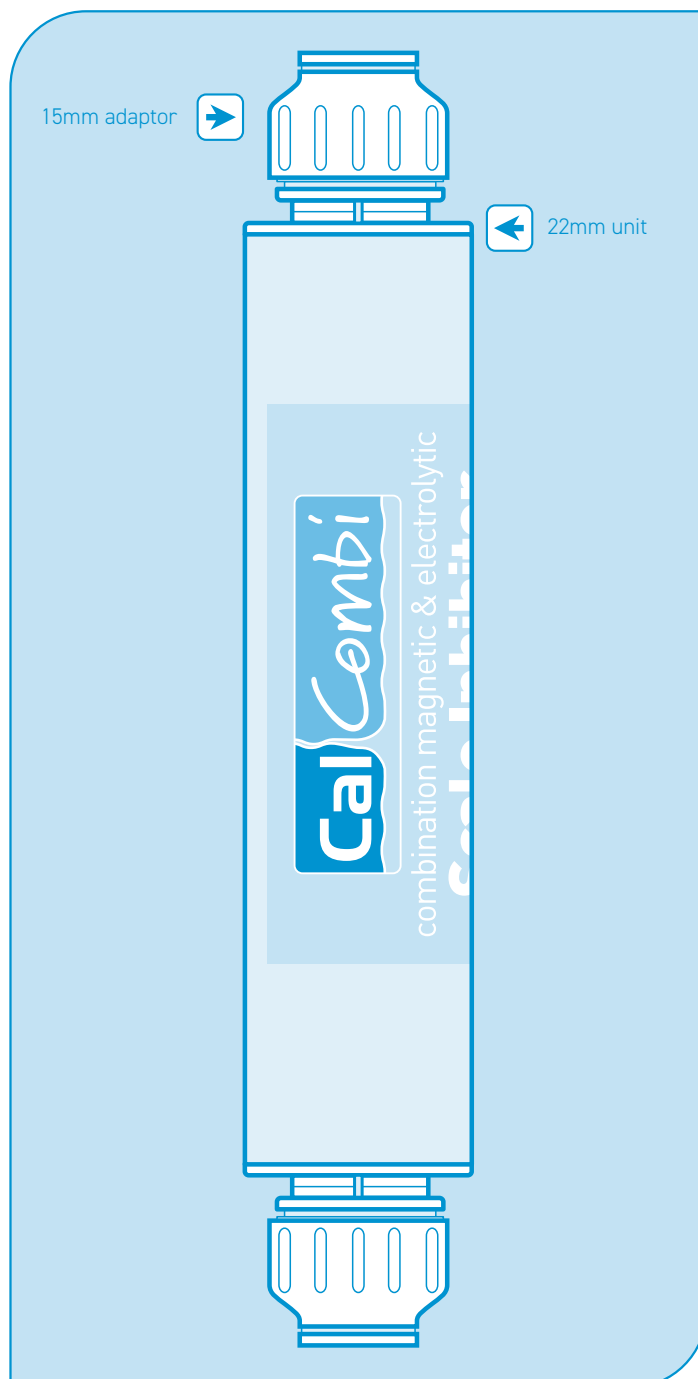
HOW CALCOMBI WORKS

This dual purpose unit can be fitted on a central heating system to prevent corrosion or on cold water mains to prevent limescale forming, which is controlled by a unique internal working design of:

1. Magnetic bar, which induces a single polarity into the water where the calcium and magnesium particles in the water also take on this same polarity, therefore as like poles repel, prevents these particles crystallising together to form a hard limescale.
2. Zinc plates, which create the same reaction as the magnetic bar when water passes over the zinc plates and inner copper body of the **CalCombi** unit, also preventing formation of hard limescale using electrolytic technology.
3. Zinc plates also gradually disperse particles of zinc into the water supply, which prevents corrosion by combating all the air and oxygen particles in the water system.

SPECIFICATION

Length:	22mm unit ~ 150mm.
	15mm unit ~ 190mm.
Diameter:	32mm.
Colour/material:	Nickel plated copper.
Connections:	22mm push fit with.
	15mm push fit adapter.
Maximum working pressure:	
	12 Bar (168psi).
Tested to:	20 Bar (280psi).
Maximum temperature:	70 °C.
Maximum flow rate:	1.08 ltr/sec (14 gpm).



Combination Magnetic & Electrolytic in-line Scale Inhibitor

with push fit fittings

Typical Applications:

- COMBINATION BOILERS
- SHOWERS
- WATER HEATERS
- IMMERSION HEATERS
- THERMAL STORE BOILERS
- TEA BOILERS/URNS
- DISHWASHERS
- HOT WATER CYLINDERS
- WASHING MACHINES
- DISHWASHERS
- CENTRAL HEATING SYSTEMS
- SUITABLE AS LIMESCALE OR CENTRAL HEATING INHIBITOR

Benefits:

- NO MAINTENANCE
- COMBINATION PRODUCT
- ENVIRONMENTALLY FRIENDLY
- NO CHEMICALS
- MODEL TO SUIT 15MM, 22MM & 28MM PIPEWORK
- WHOLE HOUSE PROTECTION
- DURABLE NICKEL PLATING
- PUSHFIT FITTINGS
- DUAL PURPOSE UNIT

SCALE INHIBITORS DO NOT EFFECT THE WATER HARDNESS LEVELS THEY JUST REDUCE THE LIMESCALE FORMING, THROUGH HEATED WATER.



Unit 4 Crown Works
Bradford Road Sandbeds
Keighley West Yorkshire BD20 5LN.

TELEPHONE 01535 210320
FACSIMILE 01535 210321
EMAIL sales @calmagltd.com



CONTENTS

- **CalCombi** combination magnetic & electrolytic scale inhibitor.
- Push fit fittings, 22mm unit fixed, 15mm unit adaptors x 2.
- Fitting instructions.
- Lifetime Guarantee registration card.



POINTS TO CONSIDER

- Collect clips are provided as added security against pipe disconnection, eg, the fitting coming into contact with rigid surfaces and behind dry-lining walls. These should be fitted after the installation of the CalCombi is complete.
- Please also ensure that the unit has been adequately secured by means of brackets either side of the CalCombi. This is good practice and acts as added security ensuring limited movement in the pipework.
- Cut only one measurement, then re-measure, also taking into account approximately 25mm each end to push pipework fully into position in push fit housings.
- Earth bonding wire, must be fitted.

YOU SHOULD NOTICE THE FOLLOWING...

- Any scale that has formed around taps, sinks etc, will begin to soften with regular contact with the treated water. This soft scale will be easier to remove than normal hard scale.
- Surfaces that are frequently in contact with water will become easier to clean.
- Shower heads will be descaled. When you first fit the device, you may find that the shower head becomes blocked with loose scale debris. If this happens (particularly with electric showers) simply remove the shower head and rinse out the debris.
- After several months of descaling you will find that your hot water system will gradually become more efficient. The water will heat up quicker and to a higher temperature, and you may even find that you get more hot water at a higher pressure depending how severely scaled up the system was. Eventually you should be able to adjust the water temperature down and make energy savings over the year.

IMPORTANT NOTE

Do not expect your kettle to stay totally scale free. The CalCombi water conditioner relies on water flow to prevent scale formation. Since there is no water flow in a kettle, soft scale will still form. The only way of preventing formation in a kettle is by using certain types of water filters.

After boiling the kettle, always remove any unwanted water and refill with fresh water. Leaving the kettle standing with freshly treated water will have a descaling effect on the kettle. Any scale that does form in the kettle will be soft and can be easily brushed away without the use of descaling products.

Calmag Limited endeavour to ensure that the information in this document is correct and fairly stated, but does not accept liability for any error or omission. The development of Calmag products is continuous and published information may be out of date.



- All In One Scale Inhibitor
- Easy to install
- For both hot & cold water systems
- Easy to use push fit fittings

Calming troubled waters

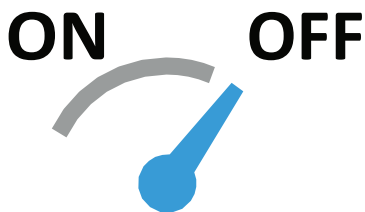


Parts are available from your local stockist.
Service contracts are available on request from Calmag.

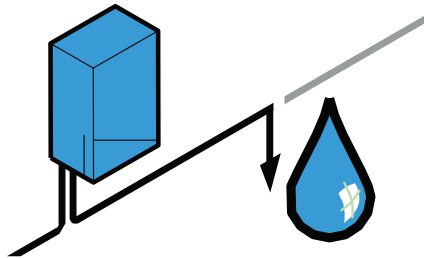
SI-CalCombi 160mm/105mm

INSTALLATION INSTRUCTIONS

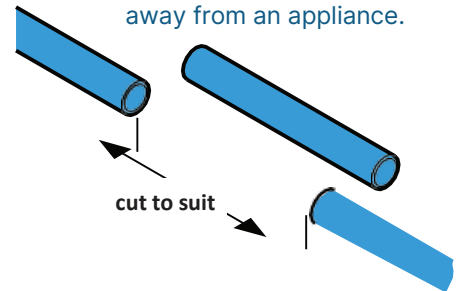
- 1** Turn off water supply.
Allow time for system to cool down if fitted in line



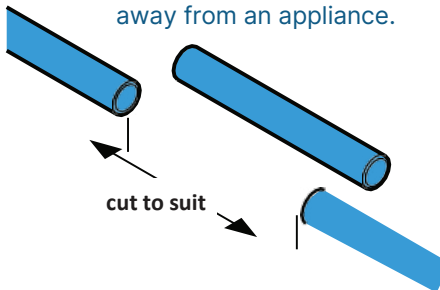
- 2** Drain relevant pipework or system where the Calcombi Mini is to be installed



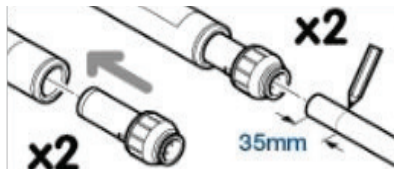
- 3** Cut pipe to suit length of unit. The unit should be installed no less than 1m away from an appliance.



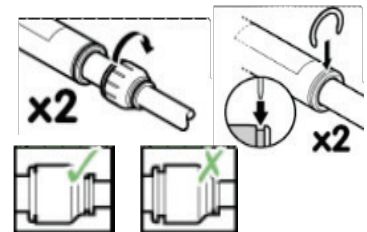
- 3** Cut pipe to suit length of unit. The unit should be installed no less than 1m away from an appliance.



- 4** Push stem fittings into both ends of Calcombi inhibitor. Mark line 35mm from end, insert pipe into adaptor up to line.



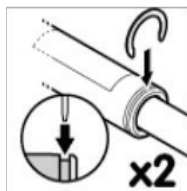
- 5** Twist stem adaptor fitting clockwise to lock. Insert Collet clip between the Calcombi unit and white Collet locking ring



- 6** Measure and mark line 35mm from end, invert pipe into both ends of the Mini inhibitor.



- 7** Insert Collet clip between the CalCombi Mini unit and white Collet locking ring



- 8** Re-open the system slowly. Check for leaks.

