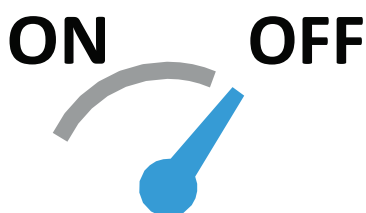


## SI-CalCombi 160mm/105mm

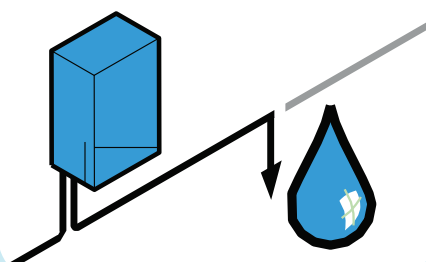
### INSTALLATION INSTRUCTIONS

#### 1 Turn off water supply.

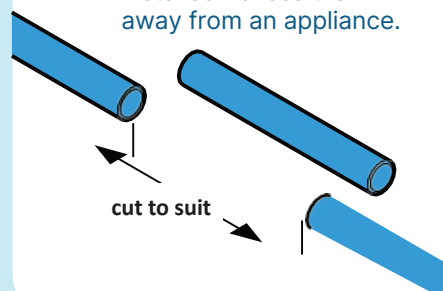
Allow time for system to cool down if fitted in line



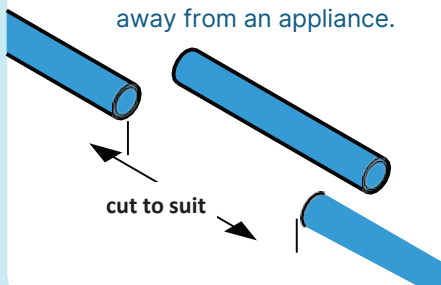
#### 2 Drain relevant pipework or system where the Calcombi Mini is to be installed



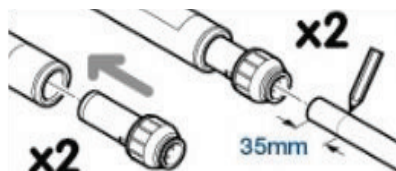
#### 3 Cut pipe to suit length of unit. The unit should be installed no less than 1m away from an appliance.



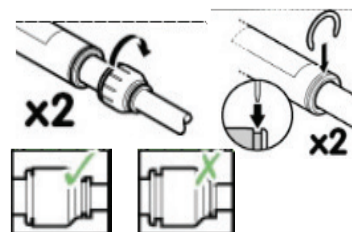
#### 3 Cut pipe to suit length of unit. The unit should be installed no less than 1m away from an appliance.



#### 4 Push stem fittings into both ends of Calcombi inhibitor. Mark line 35mm from end, insert pipe into adaptor up to line.



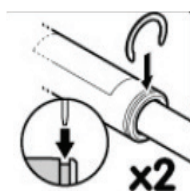
#### 5 Twist stem adaptor fitting clockwise to lock. Insert Collet clip between the Calcombi unit and white Collet locking ring



#### 6 Measure and mark line 35mm from end, insert pipe into both ends of the Mini inhibitor.



#### 7 Insert Collet clip between the CalCombi Mini unit and white Collet locking ring



#### 8 Re-open the system slowly. Check for leaks.

